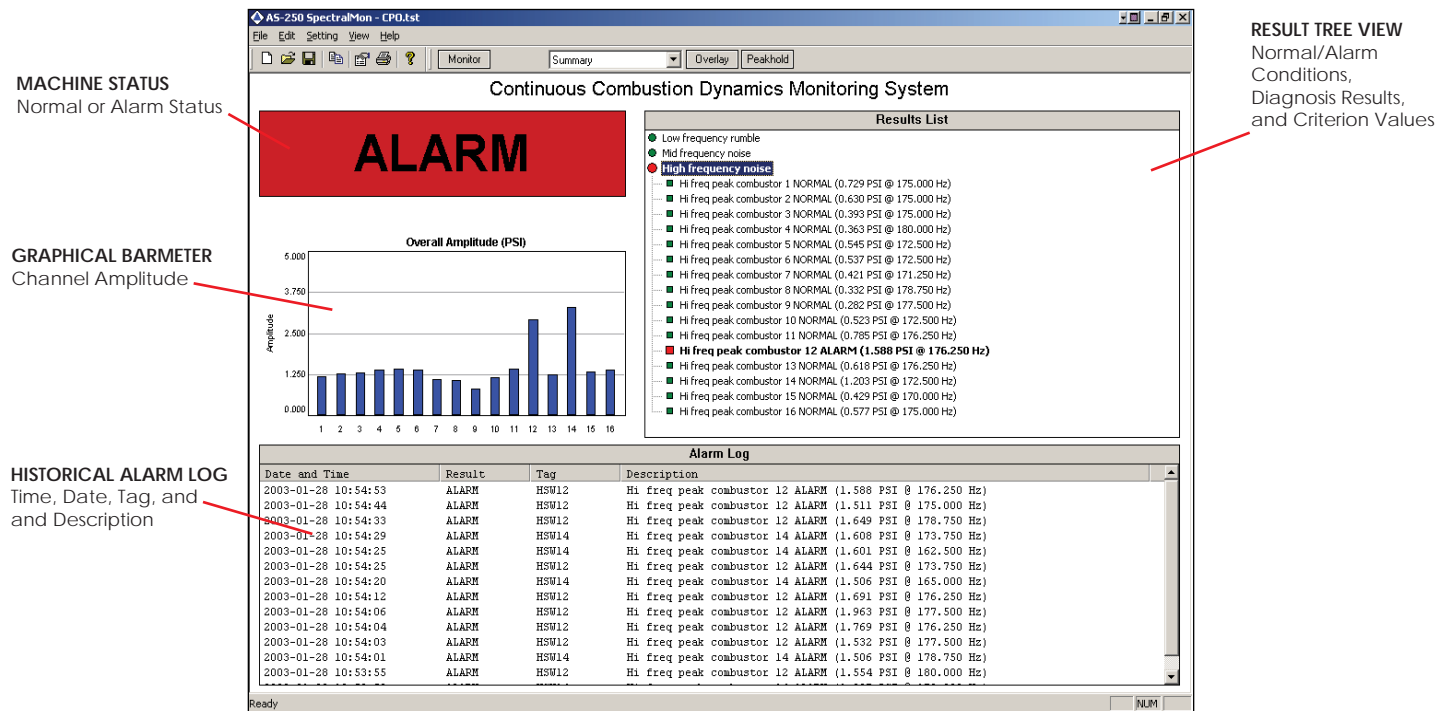


AS-250 SPECTRALMON™

REAL-TIME DYNAMIC MONITORING AND ANALYSIS SYSTEM



In many industrial applications, there is a need to monitor the dynamic characteristics of large machinery (such as turbines and compressors) or processes (such as steel and paper production).

To meet this need, Alta Solutions has designed **SpectralMon™** to provide round-the-clock dynamic monitoring. It uses powerful spectral and time analyses to detect changes in the dynamic signature of your machinery or process.

The system has a rich set of alarm criteria to catch a wide range of problems. User-defined and rpm-based energy bands and spectrum windows can be configured to identify the presence of significant frequencies. Time thresholds and statistical criteria detect spikes and changes in the time waveform.

Once a dynamic event is detected, the system instantly informs the control system or other external devices. This information can be used to alert the operator to change process settings or schedule maintenance.

The system provides a detailed historical log of the events to help correlate changes in the process or deterioration in the machinery.

Sensors including accelerometers, velometers, proximity probes, displacement sensors, pressure transducers, and microphones can easily be connected to the **SpectralMon™** system. Flexible signal conditioning provides anti-alias filtering, overload protection, AC/DC coupling and IEPE transducer power.

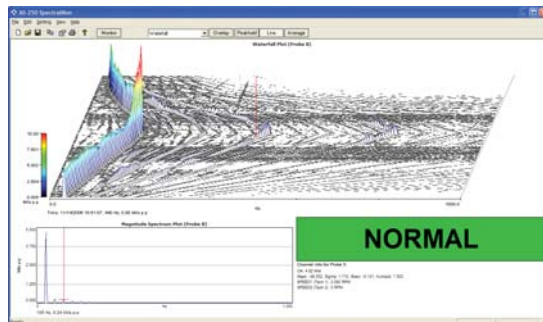
AS-250 SPECTRALMON™

REAL-TIME DYNAMIC MONITORING AND ANALYSIS SYSTEM

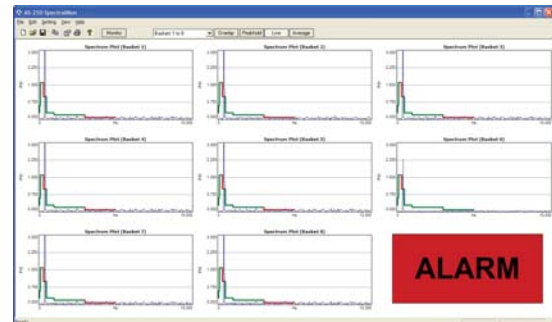
REAL-TIME DATA DISPLAY



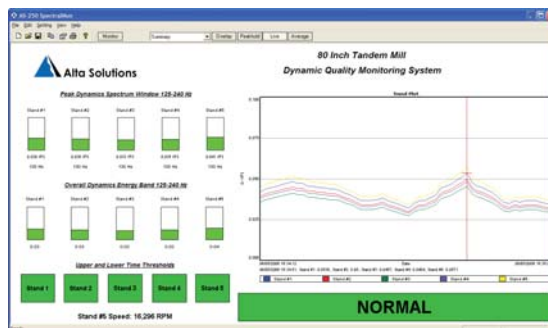
WATERFALL



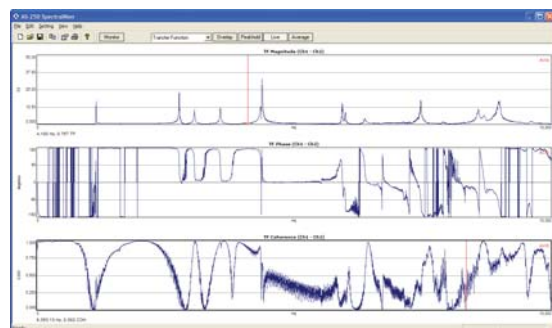
MULTI-CHANNEL



TREND



TRANSFER FUNCTION



AS-250 SPECTRALMON™

REAL-TIME DYNAMIC MONITORING AND ANALYSIS SYSTEM



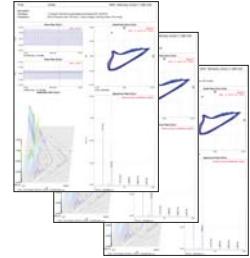
SENSOR SIGNALS

Accelerometers, Proximity Probes, Vibrometers, Pressure Transducers, Velocity Probes, and Tachometers



PROCESS DATA

PLC and DCS via Network Sockets, Digital Inputs, Ethernet, and RS-232



REPORT GENERATION AND DATA OUTPUT

Alarm Summary, HTML Reports, E-mail, Spreadsheets, Time and Spectrum Snapshots, Digital Recording, Data Trending, RA Emonitor Modbus RTU/TCP, OSI PI Interface, and SQL Database



OUTPUT DEVICES

Electromechanical Relays, PLC and DCS, Ethernet, RS-232, and Printers



DATA EXPORT

ASCII, Mathwork's Matlab, WAV, SQL, Vibrant's MEScope, and UFF (Universal File Format)

Contact Alta Solutions for the latest specifications and ordering information.



Alta Solutions
Innovative Signal Processing Solutions

Alta Solutions Incorporated

12580 Stowe Drive Poway, CA 92064, USA

Toll-Free Phone: (877) 258-2765

Email: sales@altasol.com, Web Site: www.altasol.com